



D23 Suicides in Tarrant County Medical Examiners District Between 1996-2005: A Ten Year study

Nannepaga Zachariah, PhD*, and Nizam Peerwani, MD, Tarrant County Medical Examiners Office, 200 Feliks Gwozdz Place, Ft. Worth, TX 76104

After attending this presentation, attendees will understand the role of the Medical Examiners office, to assist the community to understand the distribution of suicides in Tarrant County according to the age, race, and sex.

This presentation will impact the forensic community and/or humanity by providing knowledge of suicidal trends during the last ten years, as related to sex, race and different age groups; and comparing suicidal rates to the geographic location of Tarrant County establishing a possible impact on economic status.

The Tarrant County Medical Examiner's Office serves a tri county population of over 2.2 million that includes Tarrant, Denton, and Parker counties. Approximately 200 suicide cases of all age groups, races, and cause of suicide are recorded annually. The following table gives the suicide data between the years 1996 and 2005 including suicide rates per 100,000 population.

Table 1 Distribution between 1996-2005

| GENDER | 1996 | 1997 | 1998 | 1999 | 2000 | 2001 | 2002 | 2003 | 2004 | 2005 | TOTAL |
|-----------------------------|------------|------------|------------|------------|------------|------------|------------|-------------|-------------|-------------|-------------|
| MALE | 155 | 155 | 133 | 136 | 141 | 124 | 134 | 169 | 147 | 200 | 1494 |
| FEMALE | 36 | 36 | 34 | 29 | 29 | 51 | 50 | 44 | 60 | 48 | 417 |
| TOTAL | 191 | 191 | 167 | 165 | 170 | 175 | 184 | 213 | 207 | 248 | 1911 |
| % of TOTAL | 9.9 | 9.9 | 8.7 | 8.6 | 8.8 | 9.1 | 9.6 | 11.1 | 10.8 | 12.9 | 100% |
| RATE/PER 100,000 POPULATION | 11.2 | 10.9 | 9.2 | 8.8 | 8.6 | 8.7 | 8.8 | 9.8 | 9.3 | 10.7 | |

Table 2 Distribution among Race

| RACE | 1996 | 1997 | 1998 | 1999 | 2000 | 2001 | 2002 | 2003 | 2004 | 2005 | TOTAL |
|---------------|------------|------------|------------|------------|------------|------------|------------|------------|------------|------------|-------------|
| WHITE | 160 | 168 | 143 | 136 | 145 | 125 | 126 | 179 | 175 | 214 | 1571 |
| BLACK | 11 | 7 | 7 | 7 | 11 | 10 | 28 | 13 | 14 | 16 | 118 |
| HISPANIC | 17 | 13 | 13 | 20 | 12 | 36 | 22 | 15 | 13 | 14 | 183 |
| OTHER | 3 | 3 | 4 | 2 | 2 | 4 | 8 | 6 | 5 | 4 | 41 |
| TOTALS | 191 | 191 | 167 | 165 | 170 | 175 | 184 | 213 | 207 | 248 | 1911 |

Table 3 Distribution among Age Groups

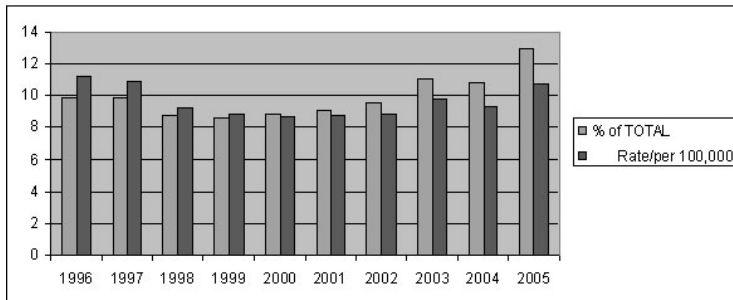
| AGE | 1996 | 1997 | 1998 | 1999 | 2000 | 2001 | 2002 | 2003 | 2004 | 2005 | TOTAL |
|---------------|------------|------------|------------|------------|------------|------------|------------|------------|------------|------------|-------------|
| 00--10 | 1 | 0 | 0 | 0 | 0 | 0 | 0 | 0 | 0 | 0 | 1 |
| 11--20 | 24 | 23 | 21 | 14 | 21 | 13 | 10 | 20 | 24 | 18 | 188 |
| 21--30 | 36 | 28 | 34 | 33 | 32 | 22 | 26 | 32 | 37 | 50 | 330 |
| 31--40 | 41 | 42 | 35 | 34 | 39 | 40 | 48 | 45 | 37 | 42 | 403 |
| 41--50 | 42 | 47 | 26 | 36 | 29 | 47 | 38 | 55 | 47 | 56 | 423 |
| 51--60 | 23 | 18 | 21 | 20 | 19 | 30 | 29 | 37 | 40 | 42 | 279 |
| 61--70 | 11 | 14 | 16 | 9 | 10 | 7 | 10 | 15 | 14 | 17 | 123 |
| 71--80 | 11 | 10 | 12 | 14 | 8 | 12 | 17 | 6 | 5 | 11 | 106 |
| OVER 80 | 2 | 9 | 1 | 4 | 8 | 4 | 6 | 3 | 3 | 10 | 50 |
| UKN | 0 | 0 | 1 | 1 | 4 | 0 | 0 | 0 | 0 | 3 | 8 |
| TOTAL | 191 | 191 | 167 | 165 | 170 | 175 | 184 | 213 | 207 | 249 | 1911 |



General Section – 2007

Table 4 Cause of Suicide

| CAUSE | 1996 | 1997 | 1998 | 1999 | 2000 | 2001 | 2002 | 2003 | 2004 | 2005 | TOTAL |
|---------------|------------|------------|------------|------------|------------|------------|------------|------------|------------|------------|-------------|
| DRUGS/POISONS | 20 | 14 | 13 | 16 | 8 | 20 | 26 | 27 | 26 | 26 | 196 |
| FIREARMS | 107 | 123 | 109 | 110 | 95 | 116 | 97 | 115 | 116 | 148 | 1136 |
| HANGING | 35 | 27 | 27 | 23 | 41 | 27 | 41 | 43 | 43 | 43 | 350 |
| OTHER | 29 | 27 | 18 | 16 | 26 | 12 | 20 | 28 | 22 | 32 | 229 |
| TOTAL | 191 | 191 | 167 | 165 | 170 | 175 | 184 | 213 | 207 | 249 | 1911 |



- Over the ten year period there seems to be a declining trend in suicide rates from 1996 to 2000. Somewhat of an increasing trend in suicide rate is indicated during recent years. See Graph.
- Collected data over the last 10 yrs indicate suicide rates are much higher in males (78.1%) than in females (27.9%).
- Predominantly higher rates are observed in white population (82.2%) followed by hispanic (9.4%) and black population (6.15%).
- Among all the methods studied, death was predominantly caused by a firearm throughout the 10 year period (59.4%) followed by Hanging 18.3%, Drugs and Poisons 10.2%. The remaining 22.9% included other causes such as asphyxia, fire, CO, drowning, blunt force and sharp force trauma, and vehicular related.

Tarrant County, Suicide, Suicidal Rate